

ETC® Service Note

Congo™ jr DMX Driver Chip Replacement



Tools Required:

#2 Phillips Screwdriver

#1 Phillips Screwdriver

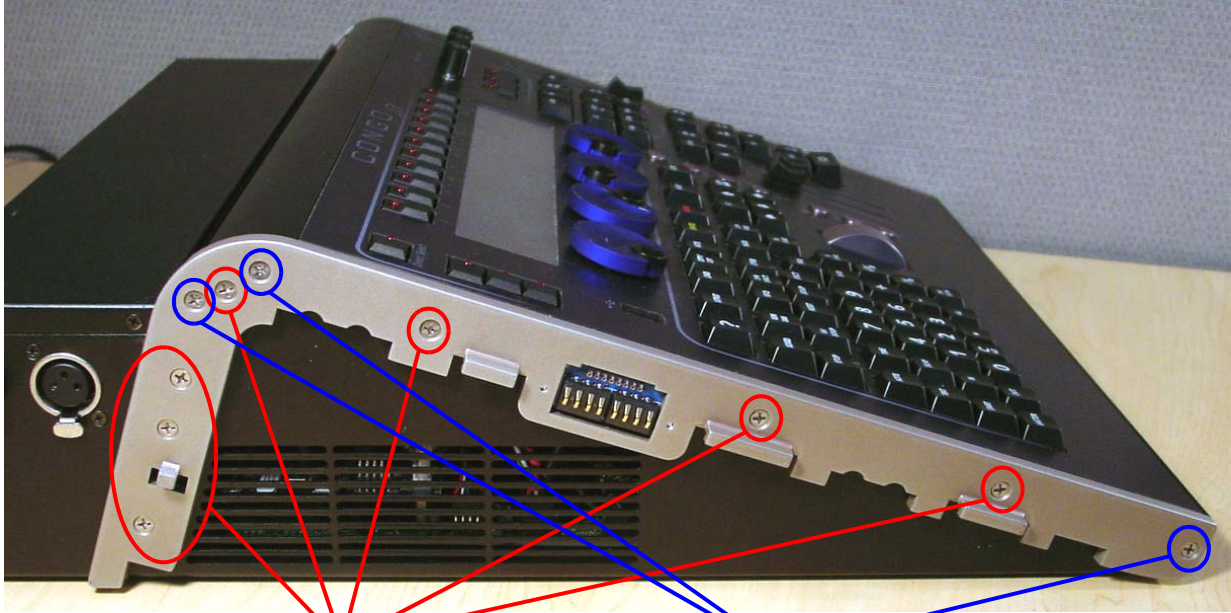
Procedure:

Step 1: Remove the protective side panels from the Congo jr Console.

Step 2: Remove the 7 screws indicated in **Red** below.

Step 3: Loosen the 3 screws indicated in **Blue** below.

NOTE: DO NOT remove the 3 screws.

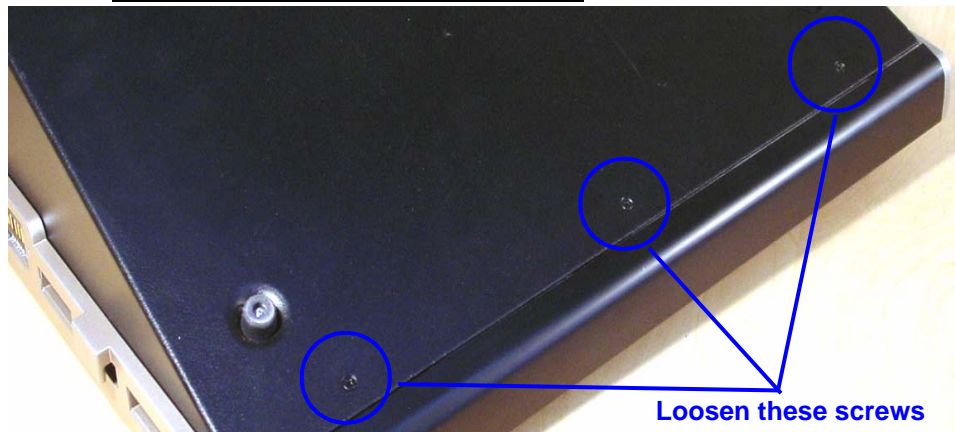


Remove these screws

Loosen these screws
2 full turns

Step 4: Carefully flip over the console and loosen the 3 screws in **blue** below:

NOTE: DO NOT remove the 3 screws.



Loosen these screws

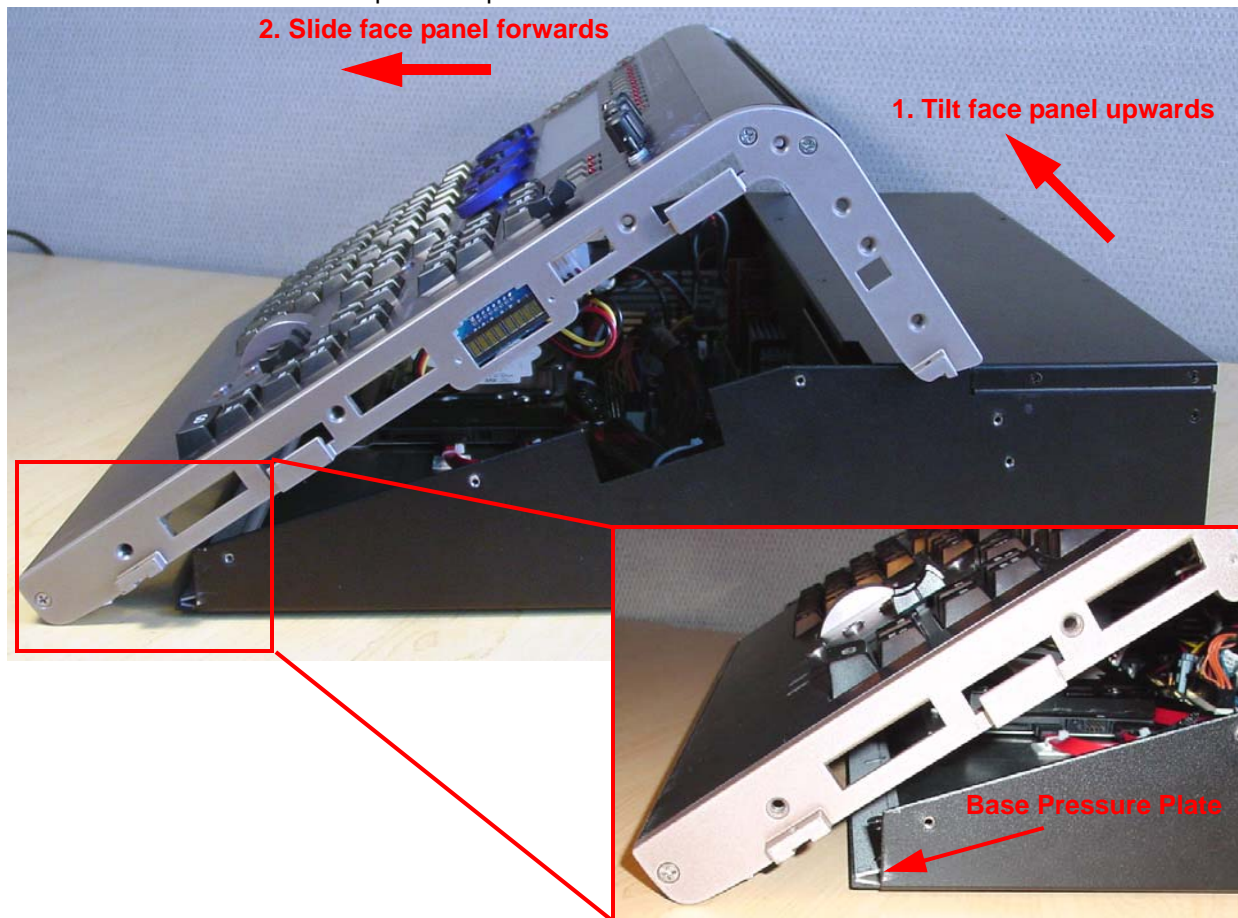


Corporate Headquarters ■ 3031 Pleasant View Road, P.O. Box 620979, Middleton, Wisconsin 53562-0979 USA ■ Tel +608 831 4116 ■ Fax +608 836 1736
London, UK ■ Unit 26-28, Victoria Industrial Estate, Victoria Road, London W3 6UU, UK ■ Tel +44 (0)20 8896 1000 ■ Fax +44 (0)20 8896 2000
Rome, IT ■ Via Ennio Quirino Visconti, 11, 00193 Rome, Italy ■ Tel +39 (06) 32 111 683 ■ Fax +39 (06) 32 656 990
Holzkirchen, DE ■ Ohmstrasse 3, 83607 Holzkirchen, Germany ■ Tel +49 (80 24) 47 00-0 ■ Fax +49 (80 24) 47 00-3 00
Hong Kong ■ Room 1801, 18/F, Tower 1 Phase 1, Enterprise Square, 9 Sheung Yuet Road, Kowloon Bay, Kowloon, Hong Kong ■ Tel +852 2799 1220 ■ Fax +852 2799 9325
Service: (Americas) service@etcconnect.com ■ (UK) service@etcuk.com ■ (DE) techserv-hoki@etcconnect.com ■ (Asia) service@etcasia.com
Web: www.etcconnect.com ■ Copyright © 2006 ETC. All Rights Reserved. ■ Product information and specifications subject to change.
● Pending ■ Rev A ■ Released 02/2007

ETC Service Note

Congo™ jr DMX Driver Chip Replacement

- Step 5: Flip the console back onto the base.
- Step 6: Lift the back side of the face panel upwards away from the base.
- Step 7: Slide the face panel towards the front of the console. The face panel will slip under the base pressure plate.



- Step 8: Rest the face panel off to the left side of the base unit. (The side with the DMX connectors) There is no need to remove the face panel cables when replacing the DMX connectors.
- Step 9: Remove all 4 screws from both sides of the base.



Remove these screws (located on side of chassis)

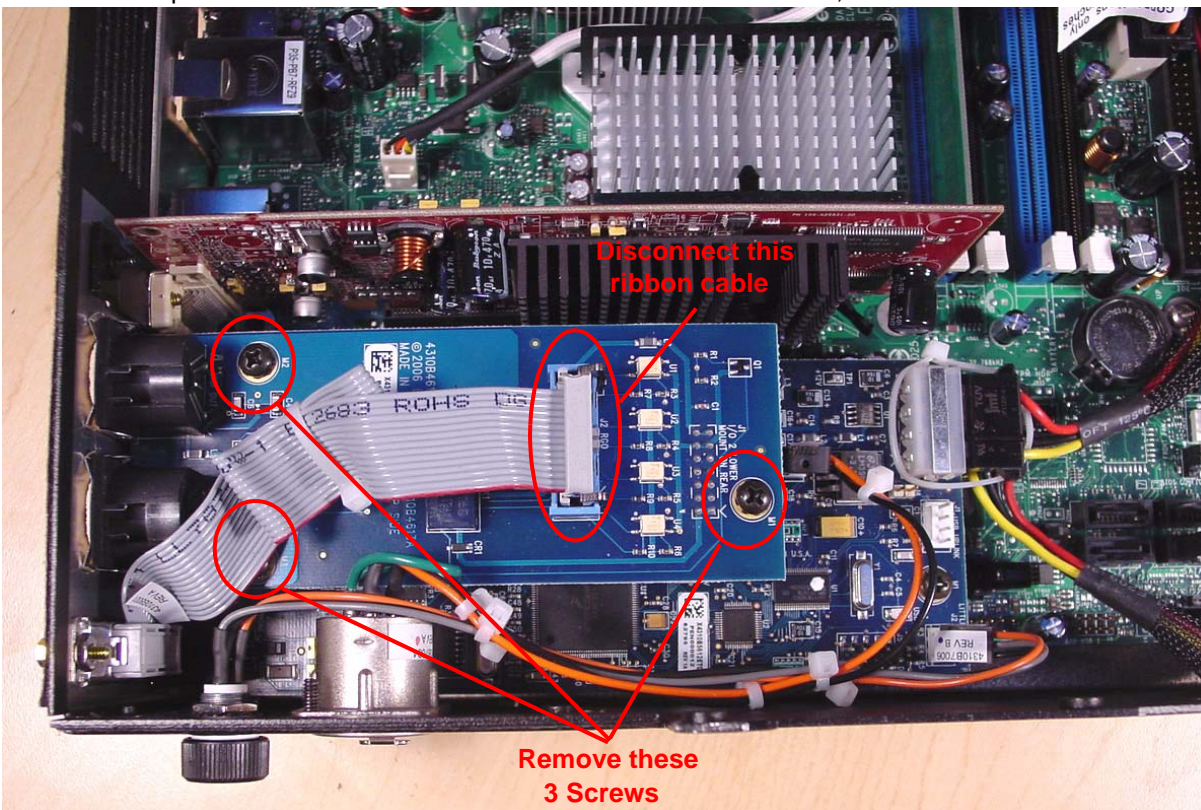
ETC Service Note

Congo™ jr DMX Driver Chip Replacement

Step 10: Remove the base cover, and set aside.

Step 11: Locate the MIDI riser card near the Video Card, and above the DMX I/O Card.

Step 12: Remove the ribbon cable from the MIDI riser card, and remove the 3 screws.



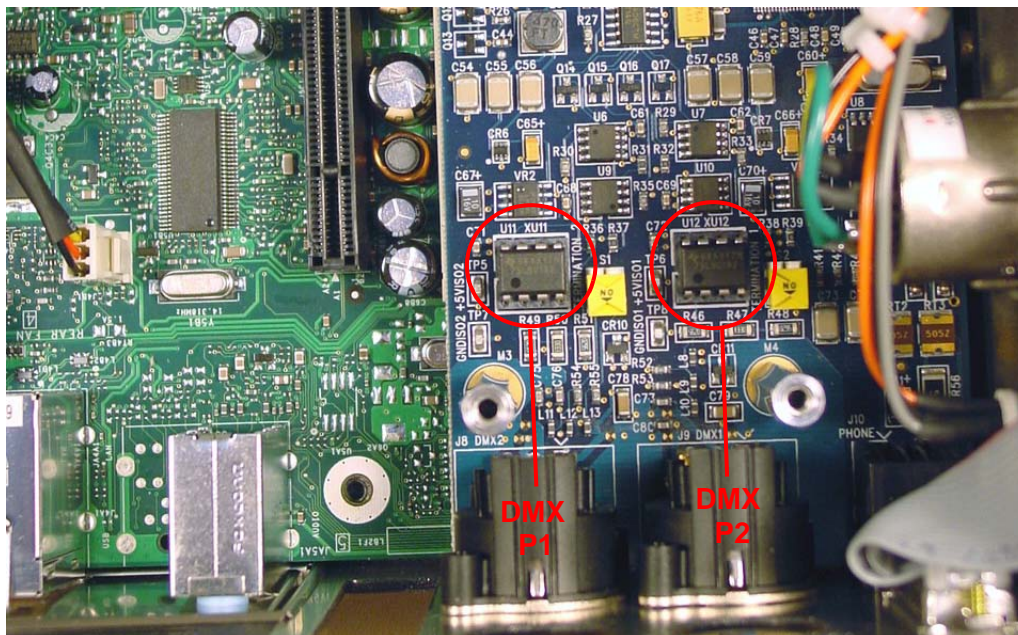
Step 13: Lift up on 2 sides of the MIDI card being careful not to bend any of the pins below the card.

Step 14: Set the MIDI card aside.

Step 15: Locate either DMX Driver Chip:

U11 - DMX Port 1

U12 - DMX Port 2

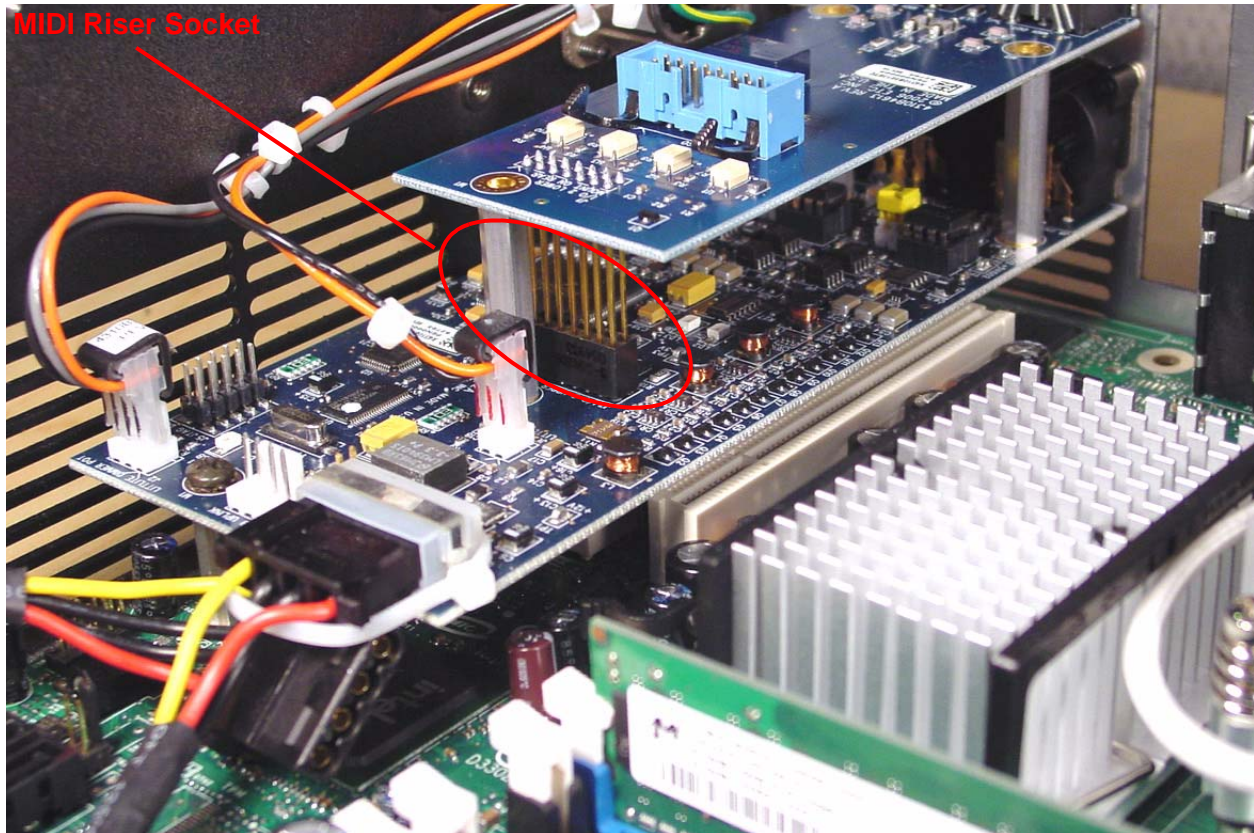


ETC Service Note

Congo™ jr DMX Driver Chip Replacement

Step 16: Replace the desired DMX driver chip. (75LBC182) ETC Part Number Z1458-F.

Step 17: Re-connect the MIDI riser card to the DMX I/O card. Line up all 14 pins with the I/O socket. Once the pins are aligned, gently push down on the MIDI riser card to seat it into the socket.

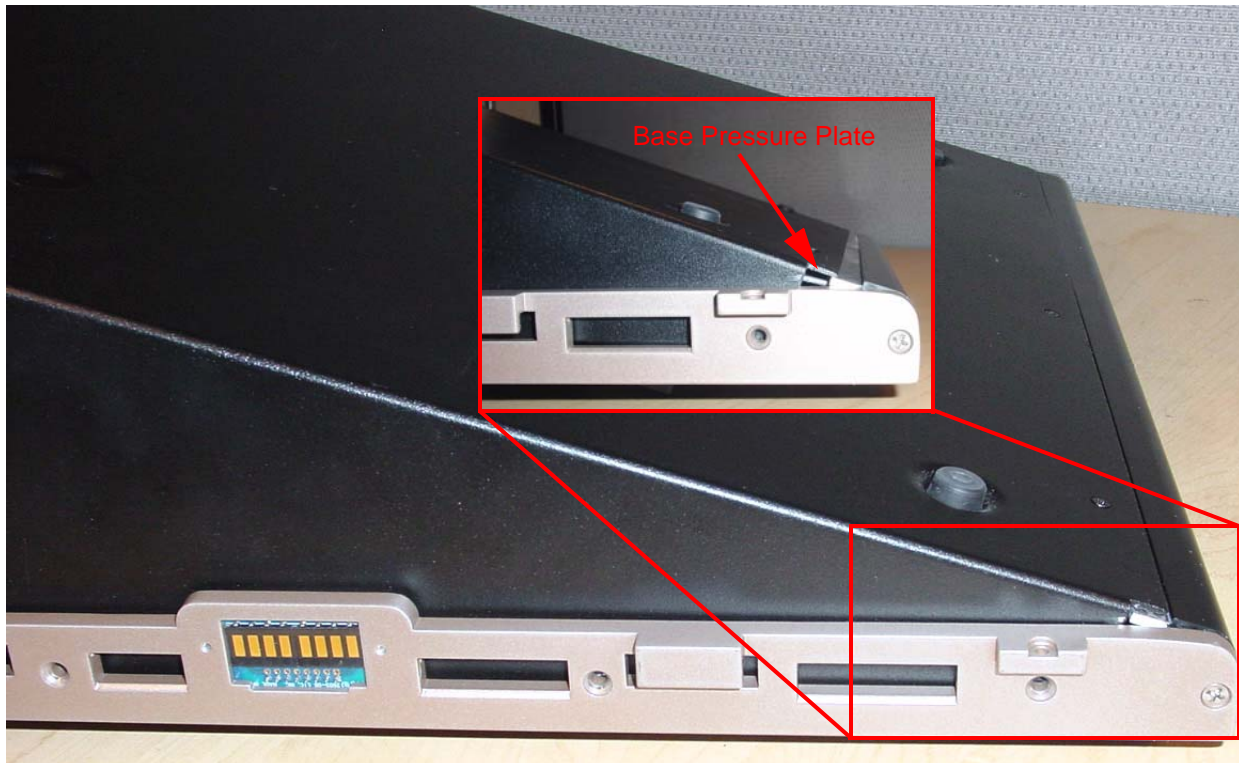


Step 18: Place the base cover back onto the base of the console and re-attach all 4 screws.

ETC Service Note

Congo™ jr DMX Driver Chip Replacement

Step 19: Slide the face panel back under the base pressure plate.



Step 20: Re-attach all 7 screws from each side of the console face panel.

Step 21: Flip the face panel over and tighten the 3 screws on the base of the console.

Step 22: Power the console up and verify correct console operation and verify DMX outputs on both ports.

ETC Service Note

Congo™ jr DMX Driver Chip Replacement
